

Growth and Change

The Demographics of Greater West Houston

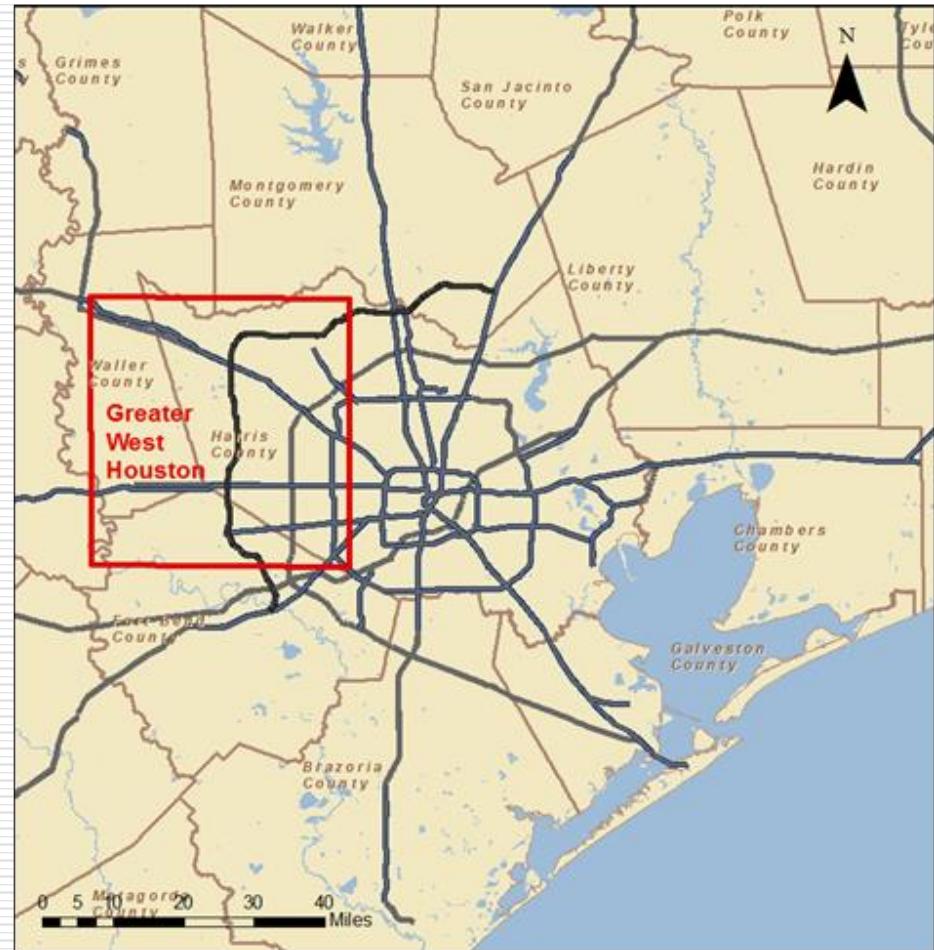
West Houston Leadership Institute

February 25, 2016

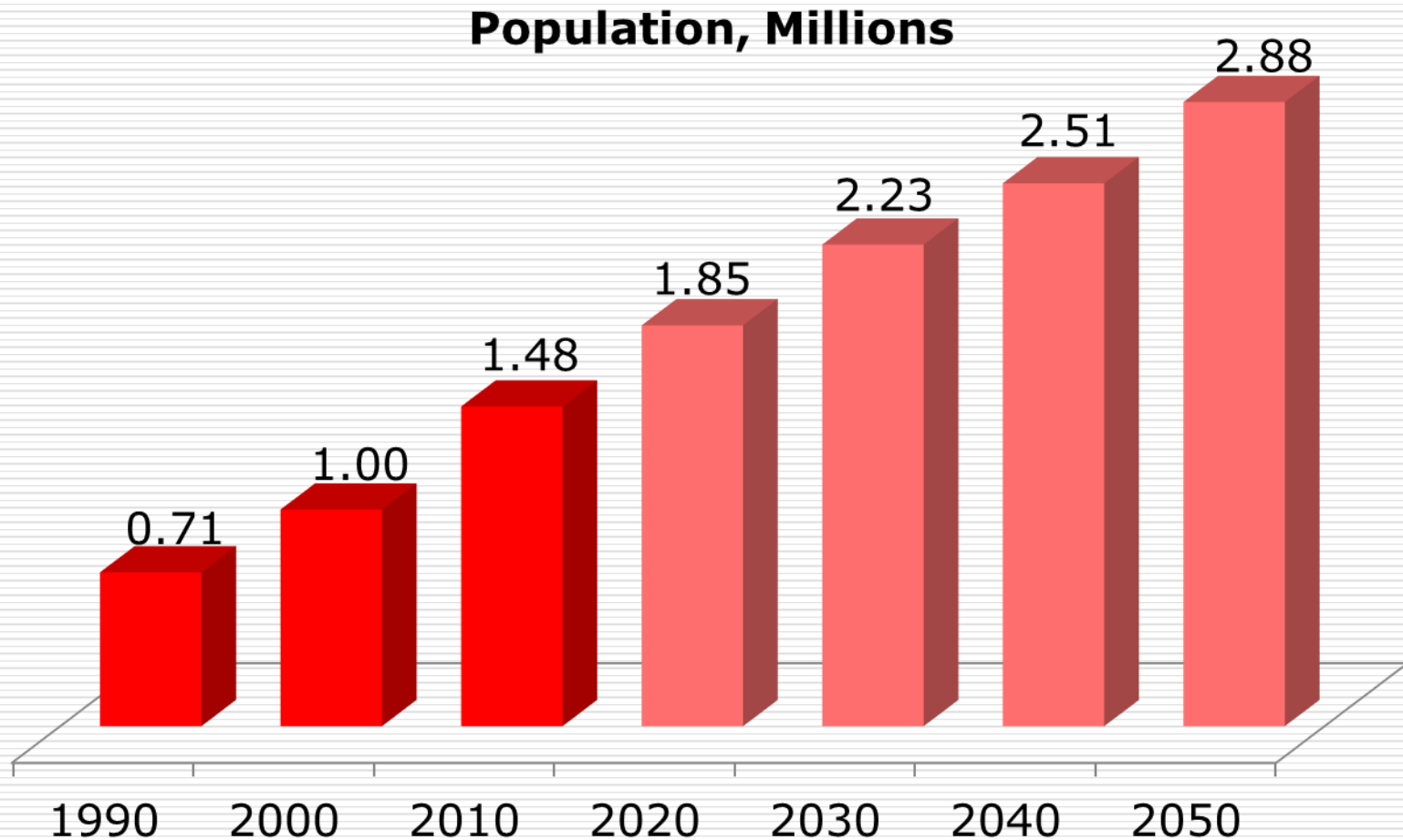


Introduction

- The area, as of the 2010 US Census
 - 1,000 square miles
 - 1.48 million residents
 - 555,000 households
 - 457,000 jobs
 - 3 regional employment centers



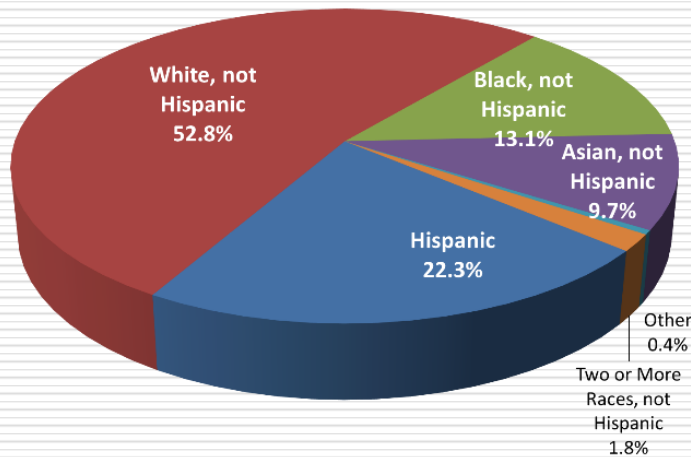
Population Trend and Forecast



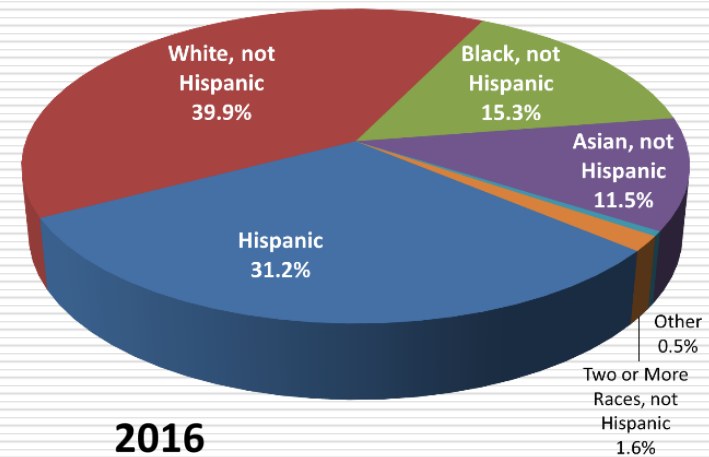
Source: U.S. Bureau of the Census for 1990, 2000, and 2010. CDS Market Research for Forecasts

Increasing Ethnic Diversity

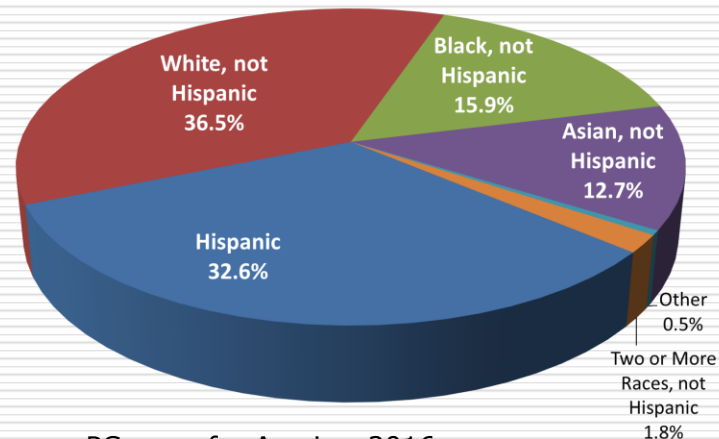
2000



2010



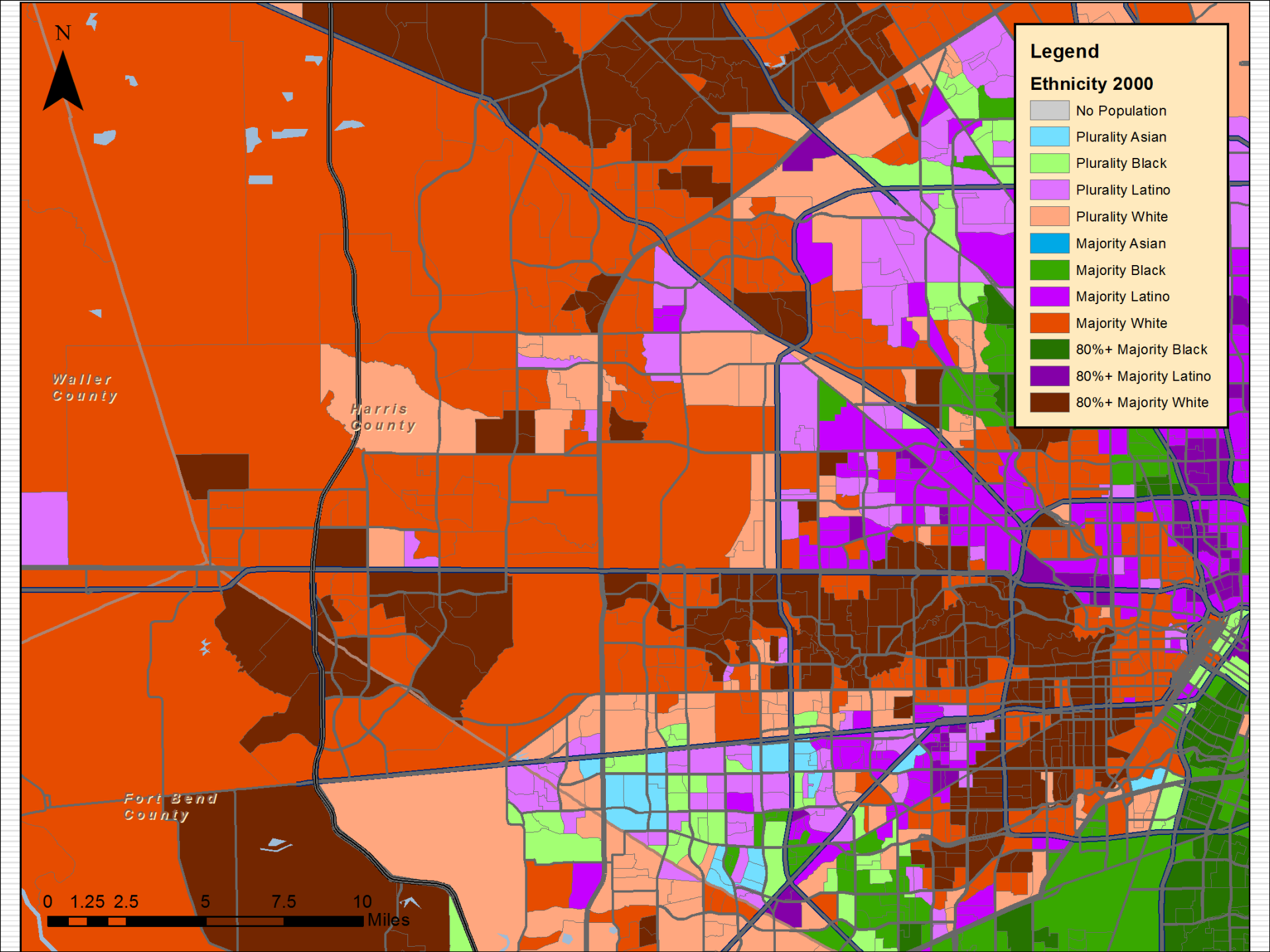
2016

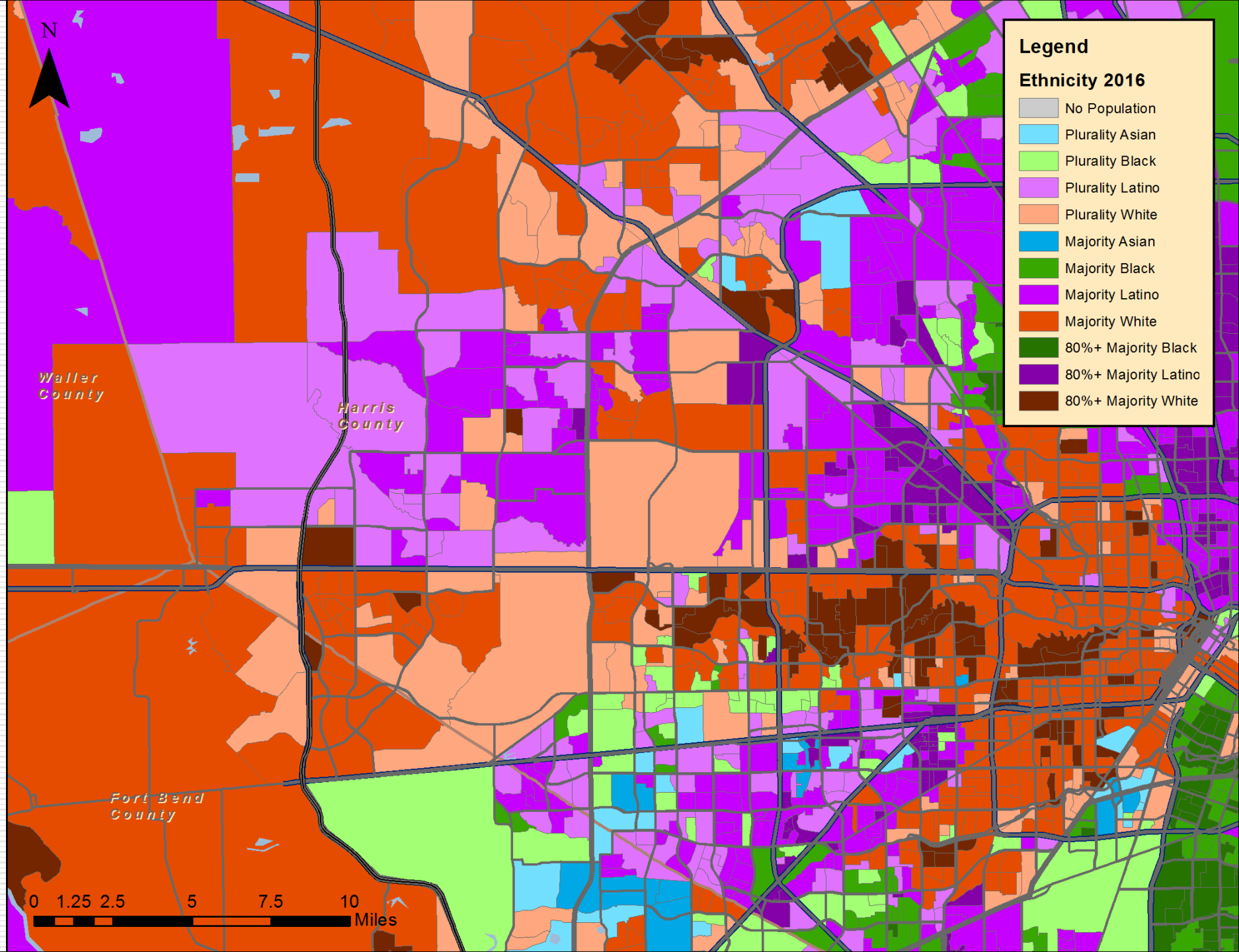


□ Diversity Index

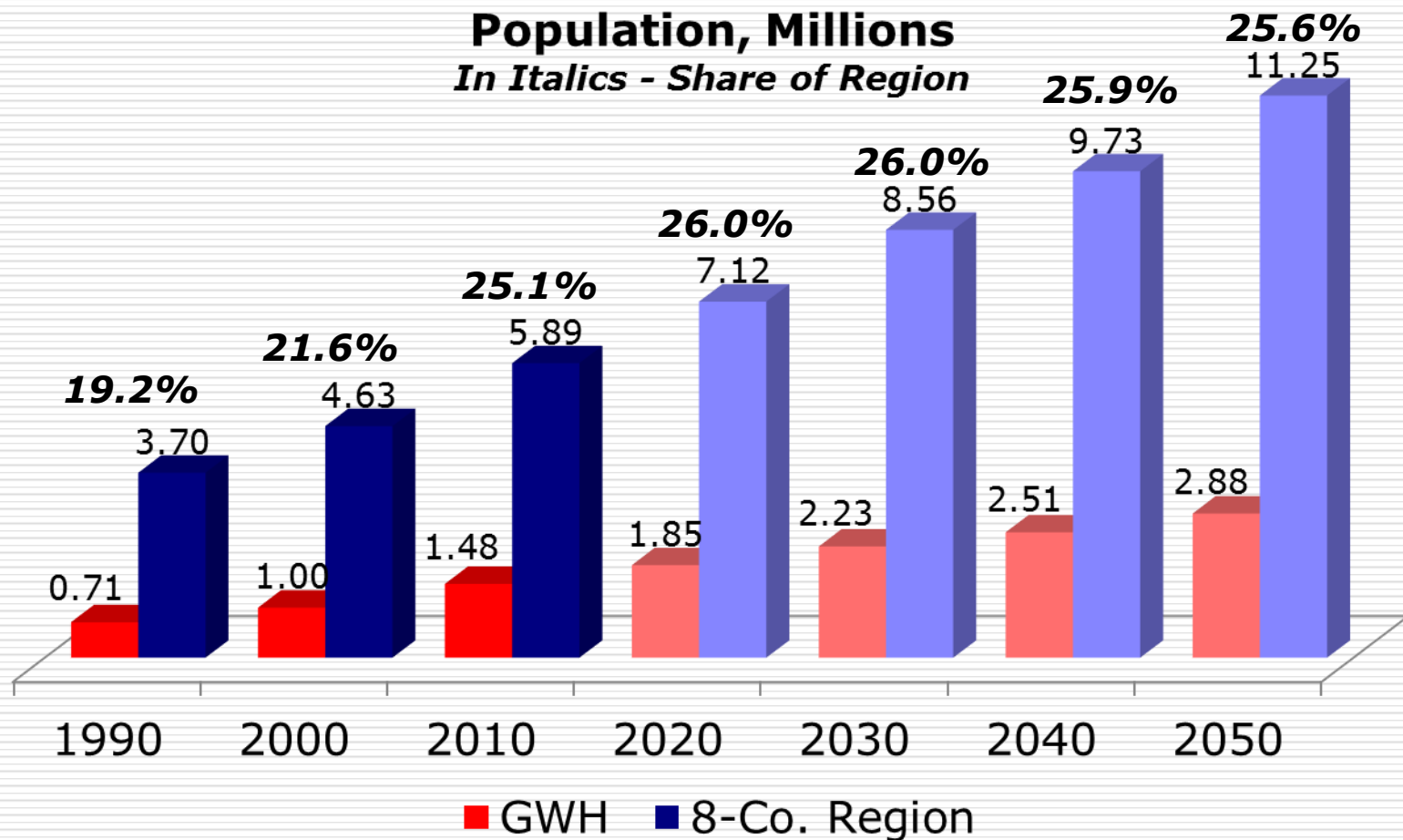
- 2000: 64.5%
- 2010: 70.6%
- 2014: 71.9%

Source: U.S. Bureau of the Census, 2000 and 2010 Census, PCensus for Arcview 2016



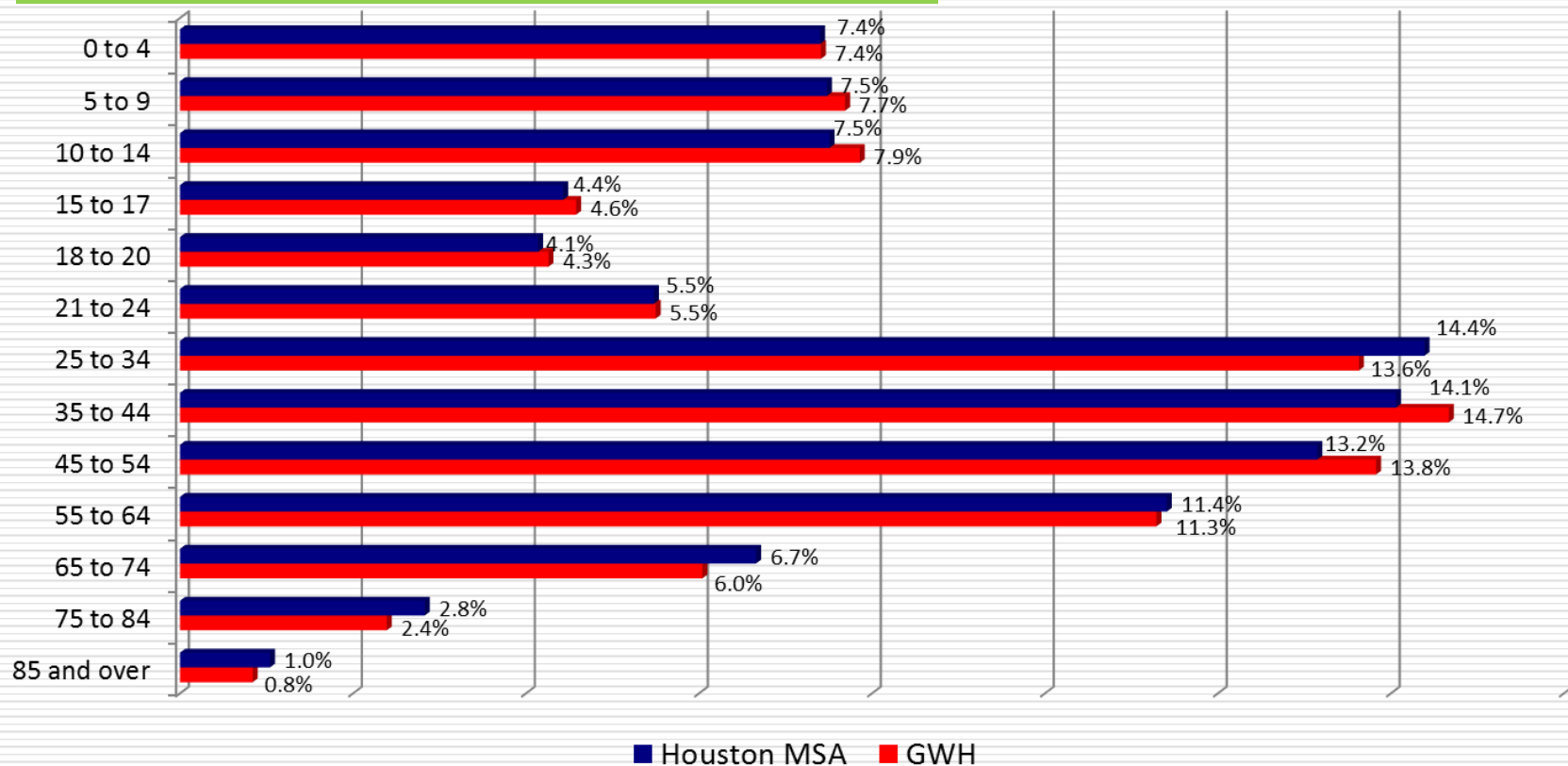


West Houston Vs. The Region



Source: U.S. Bureau of the Census for 1990, 2000, and 2010. CDS Market Research for Forecasts

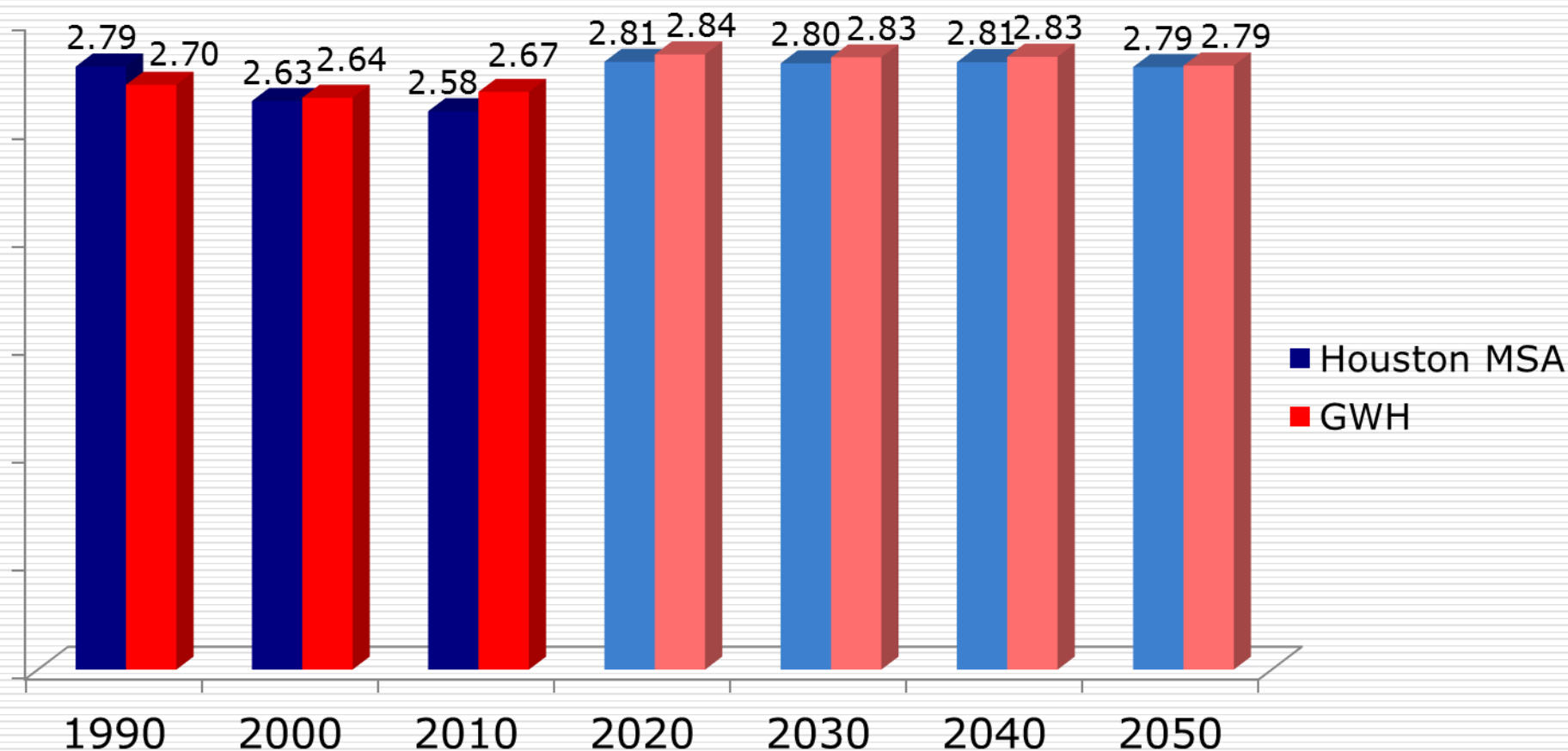
Age Distribution - 2016



□ Median age of 34.3 is slightly lower than the Houston Region's 34.4

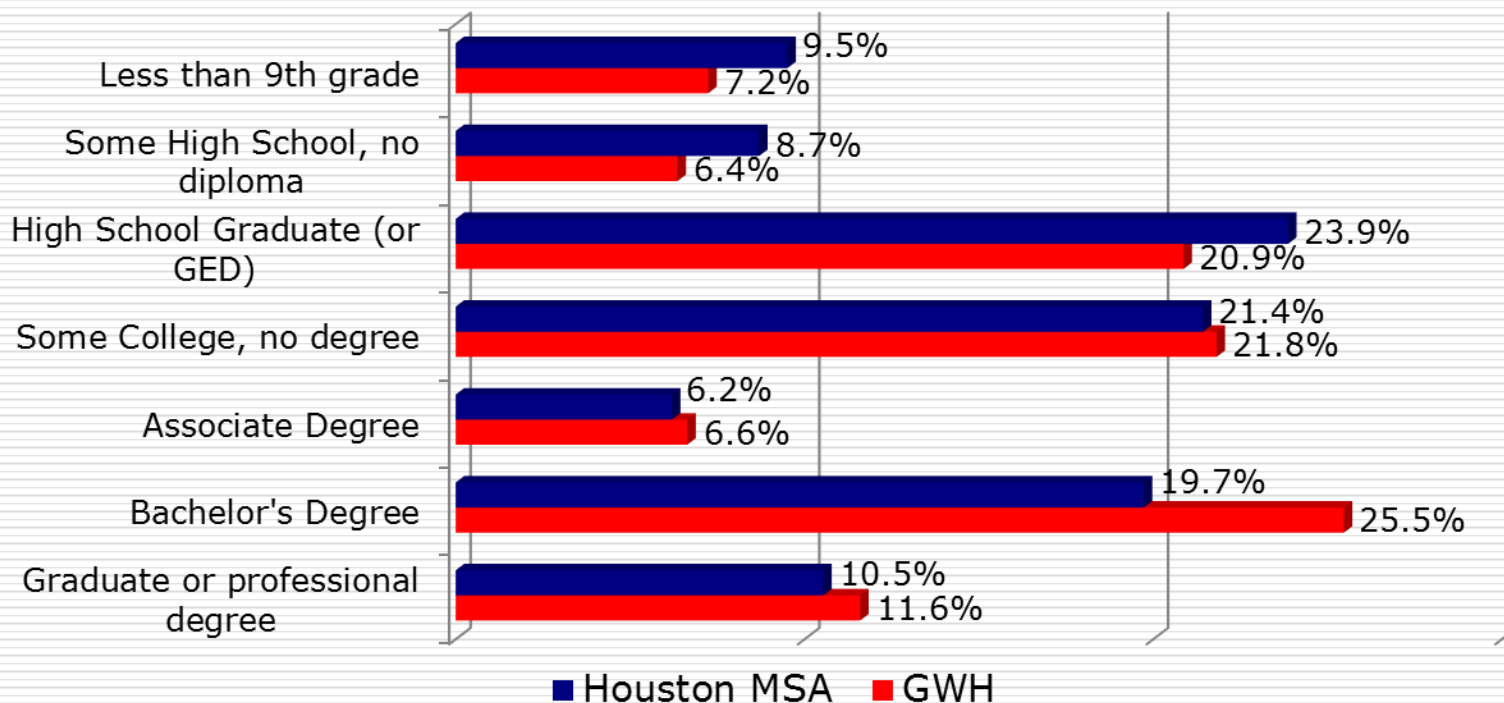
Source: PCensus for ArcView 2016

Average Household Size

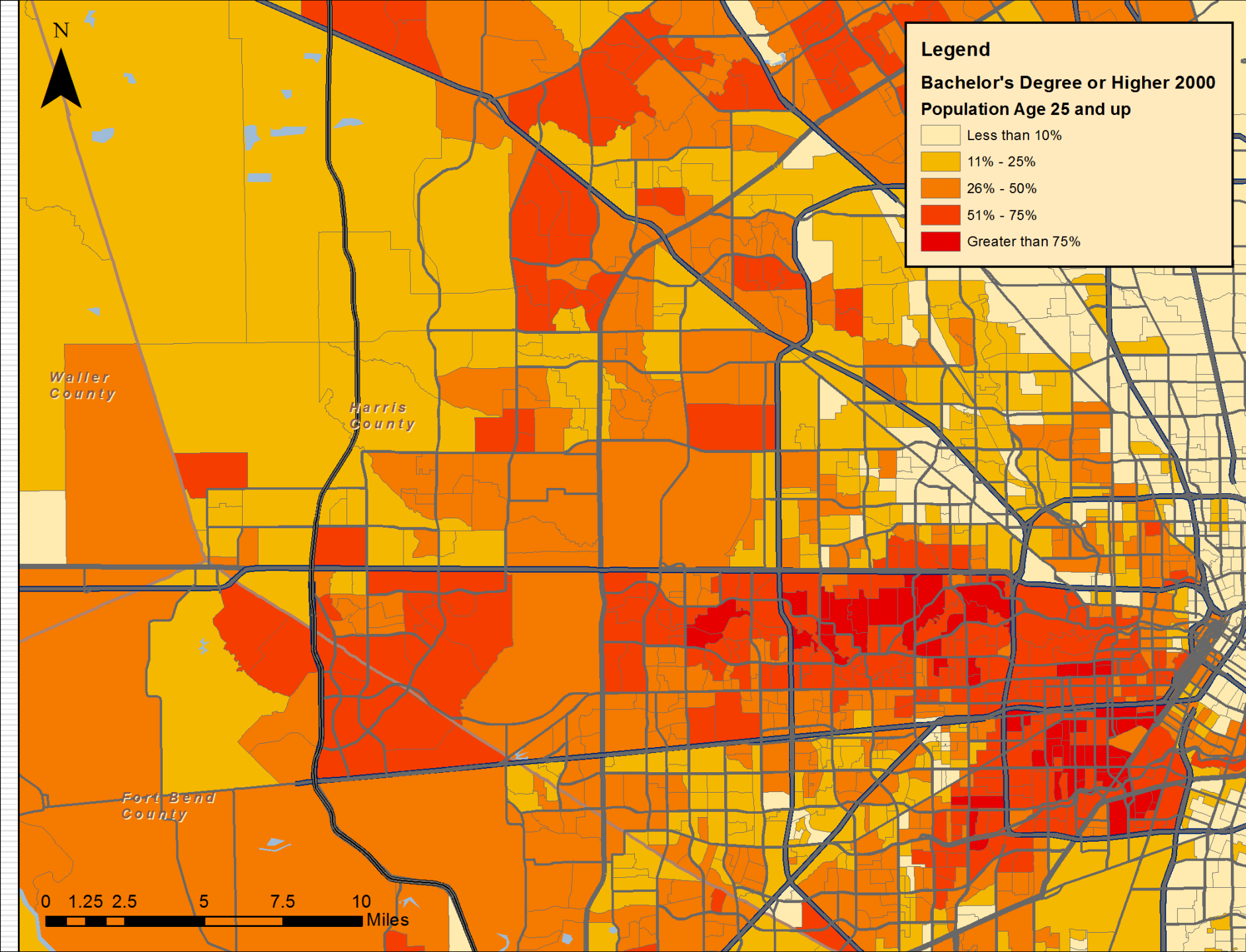


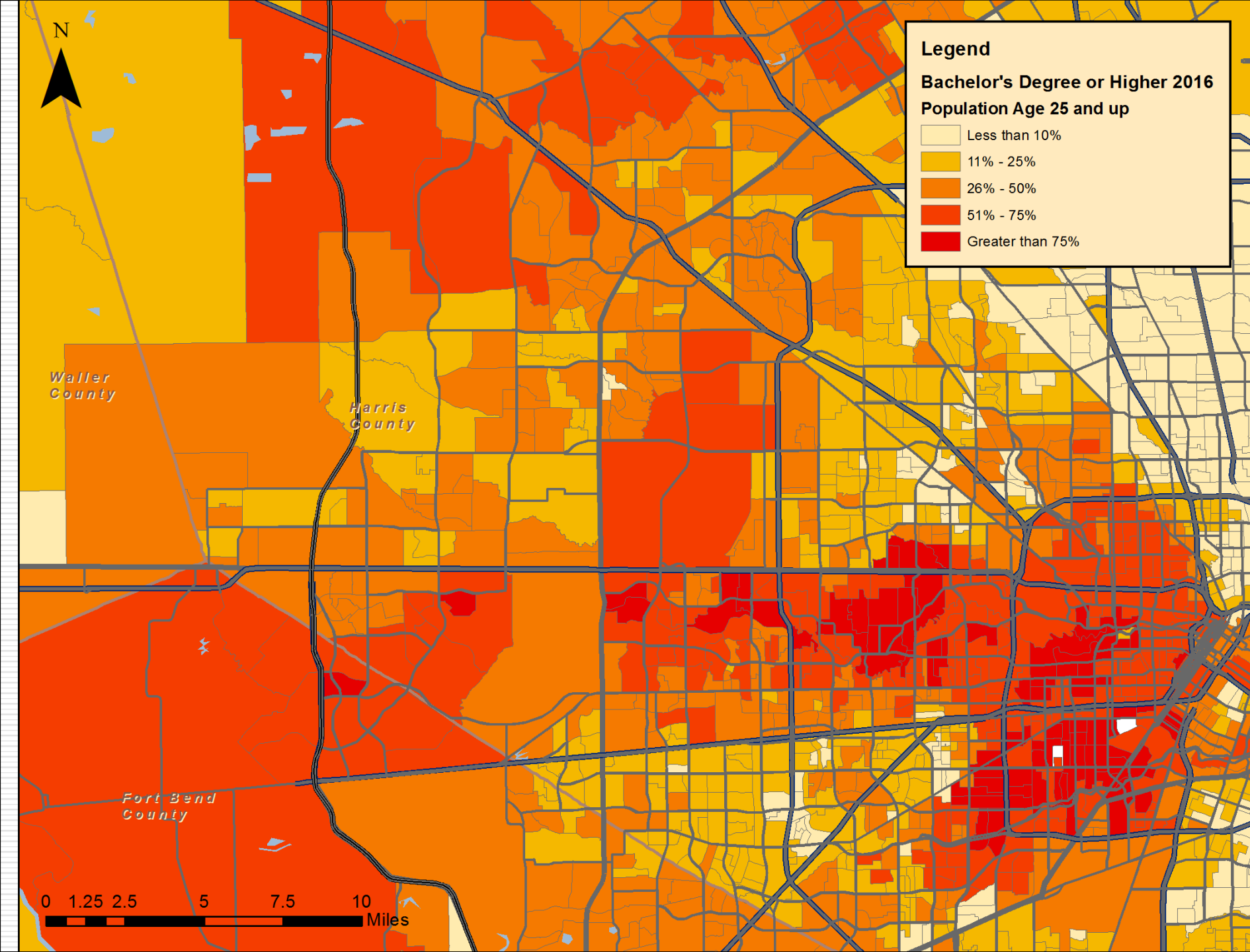
Source: U.S. Bureau of the Census for 1990, 2000, and 2010. CDS Market Research for Forecasts

Education - 2016

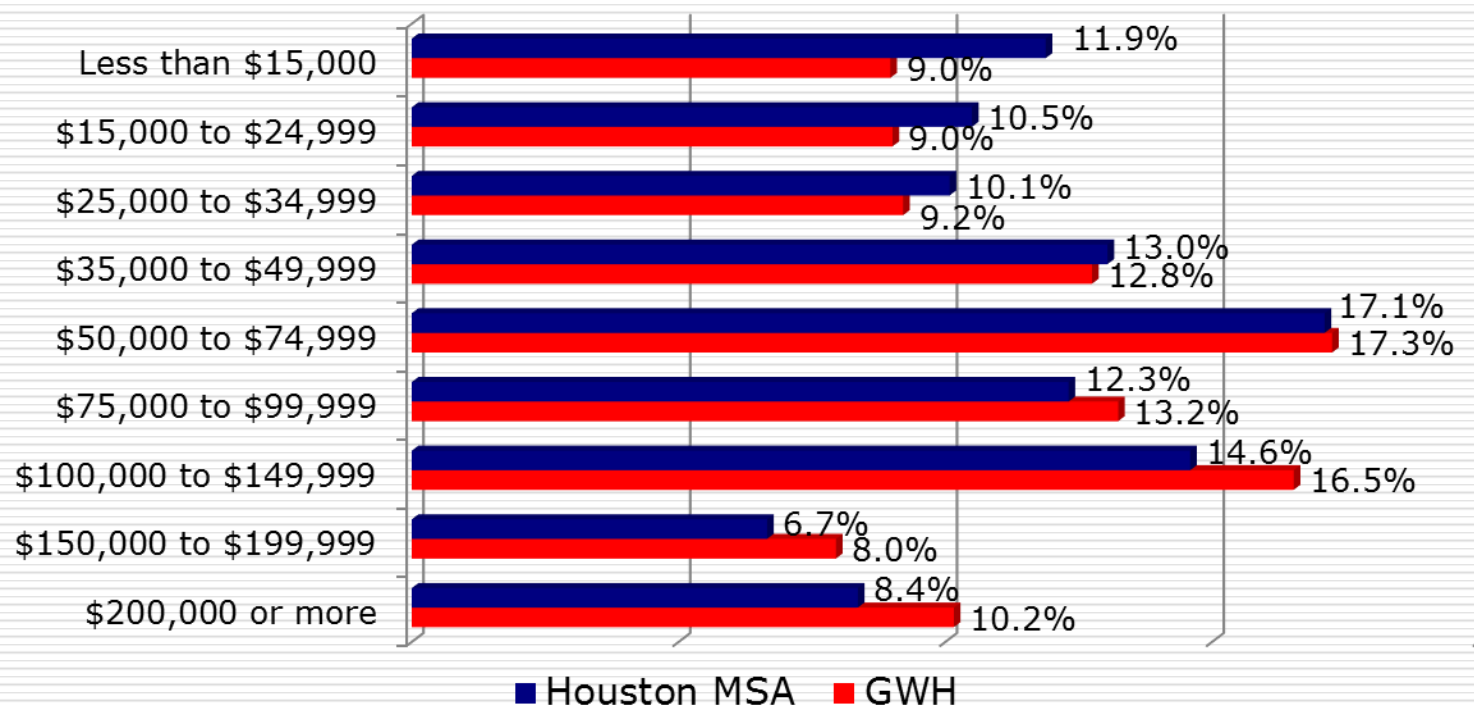


□ 43.7% of adults in West Houston have a college degree, compared to 36.5% in the Houston MSA

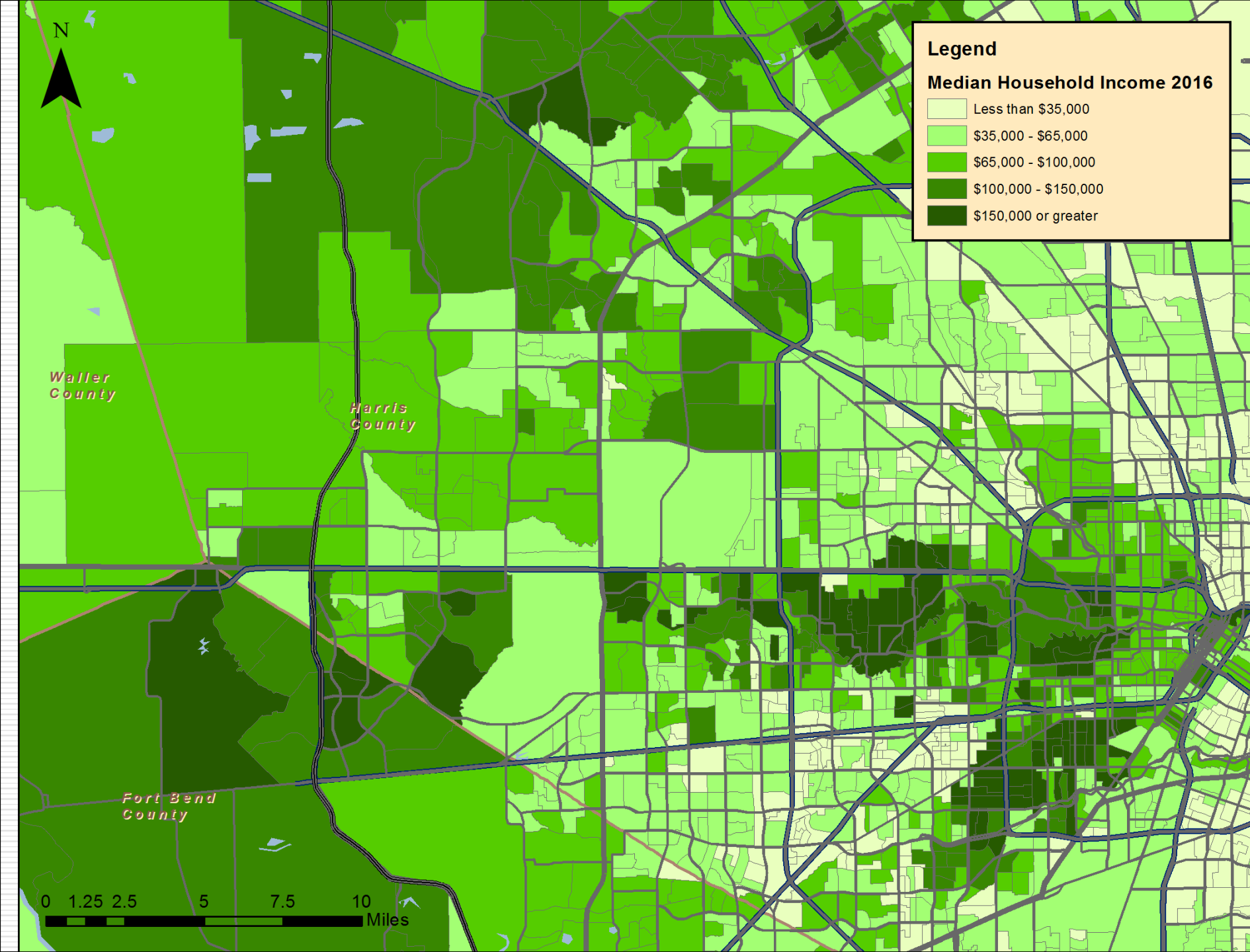




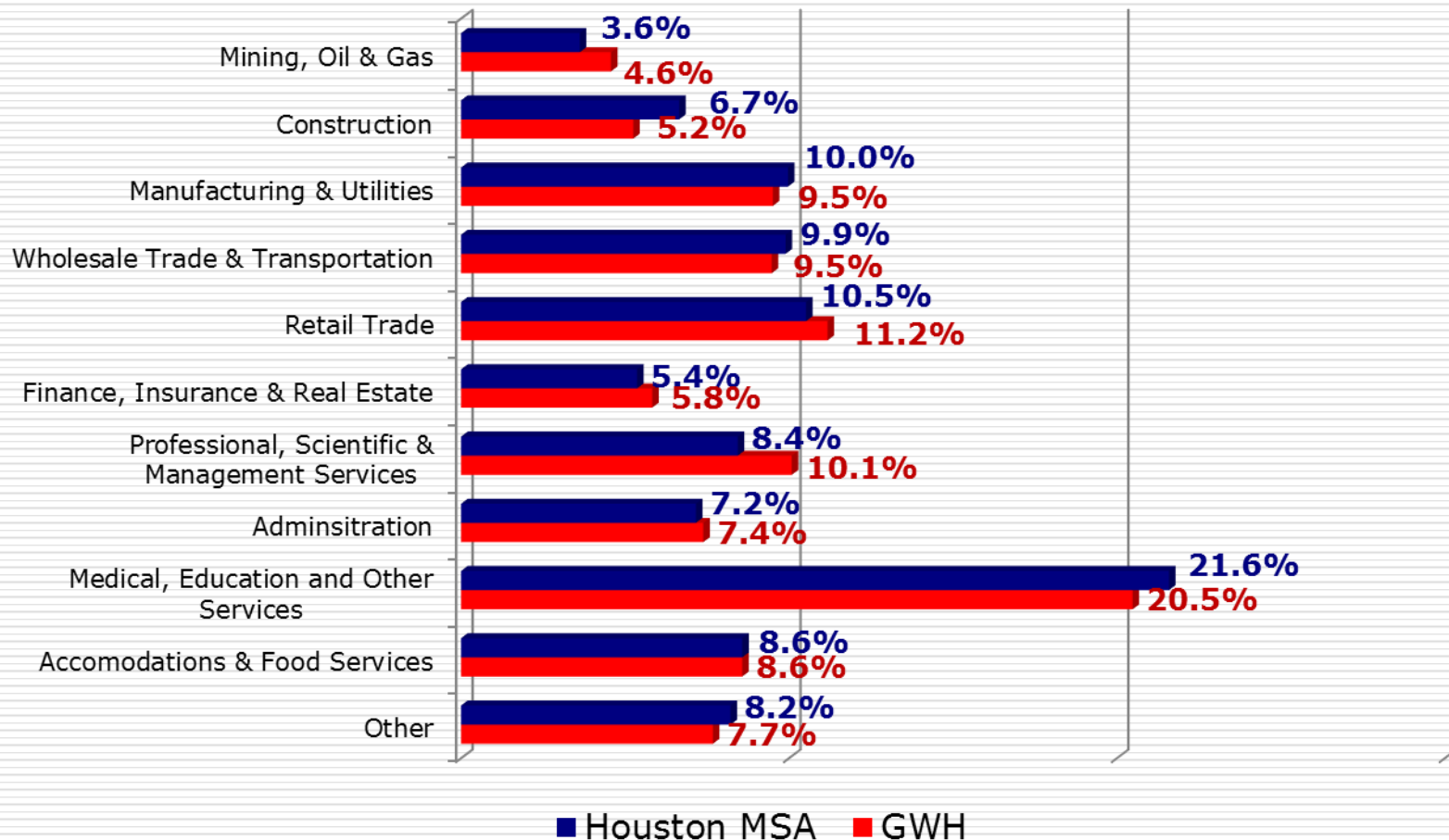
Household Income - 2016



□ Median Household Income is \$70,320, compared to \$61,968 for the Houston MSA



Resident Employment - 2013

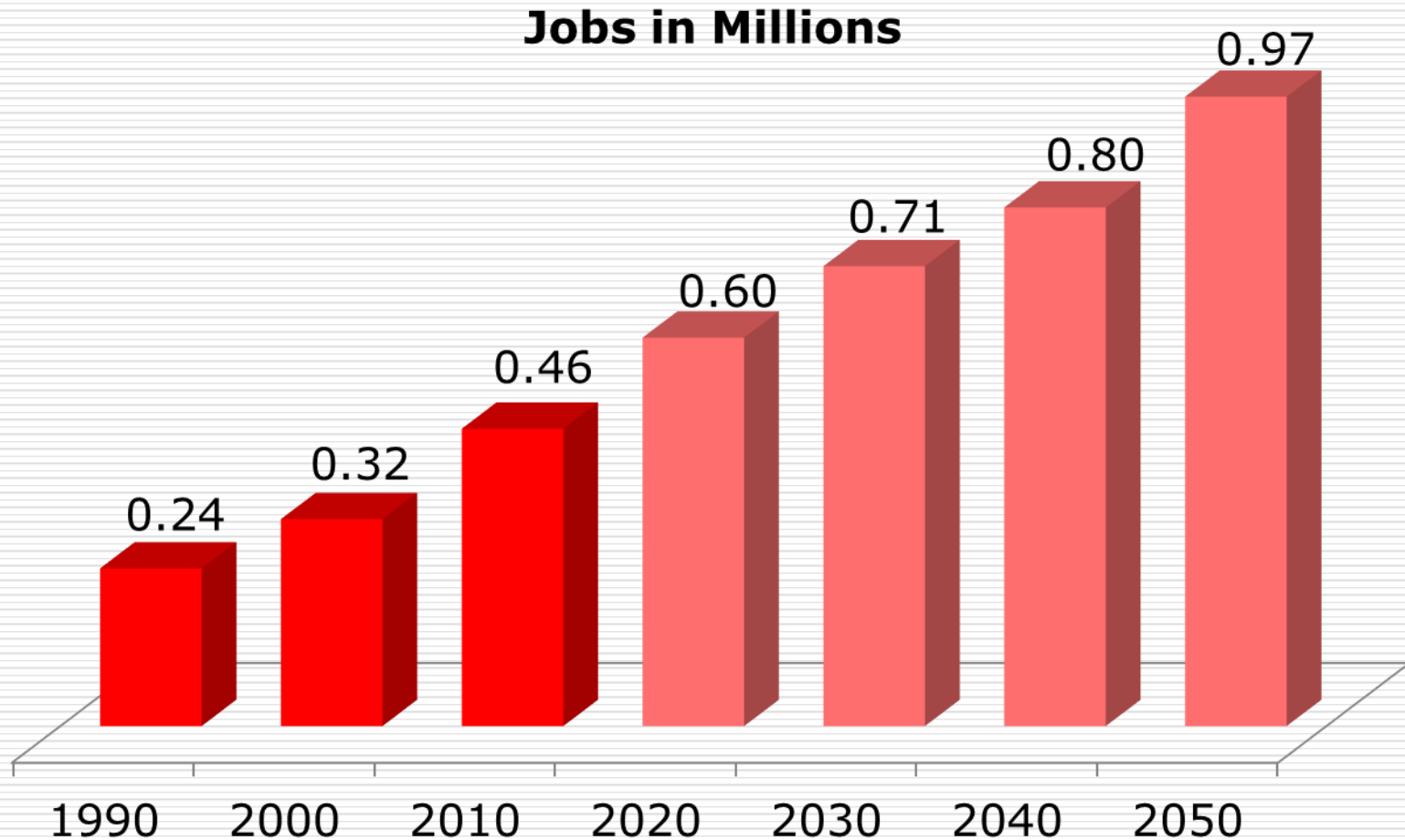


Source: U.S. Census, Longitudinal Employment-Household Dynamics (LEHD) 2013

Households and Housing - 2016

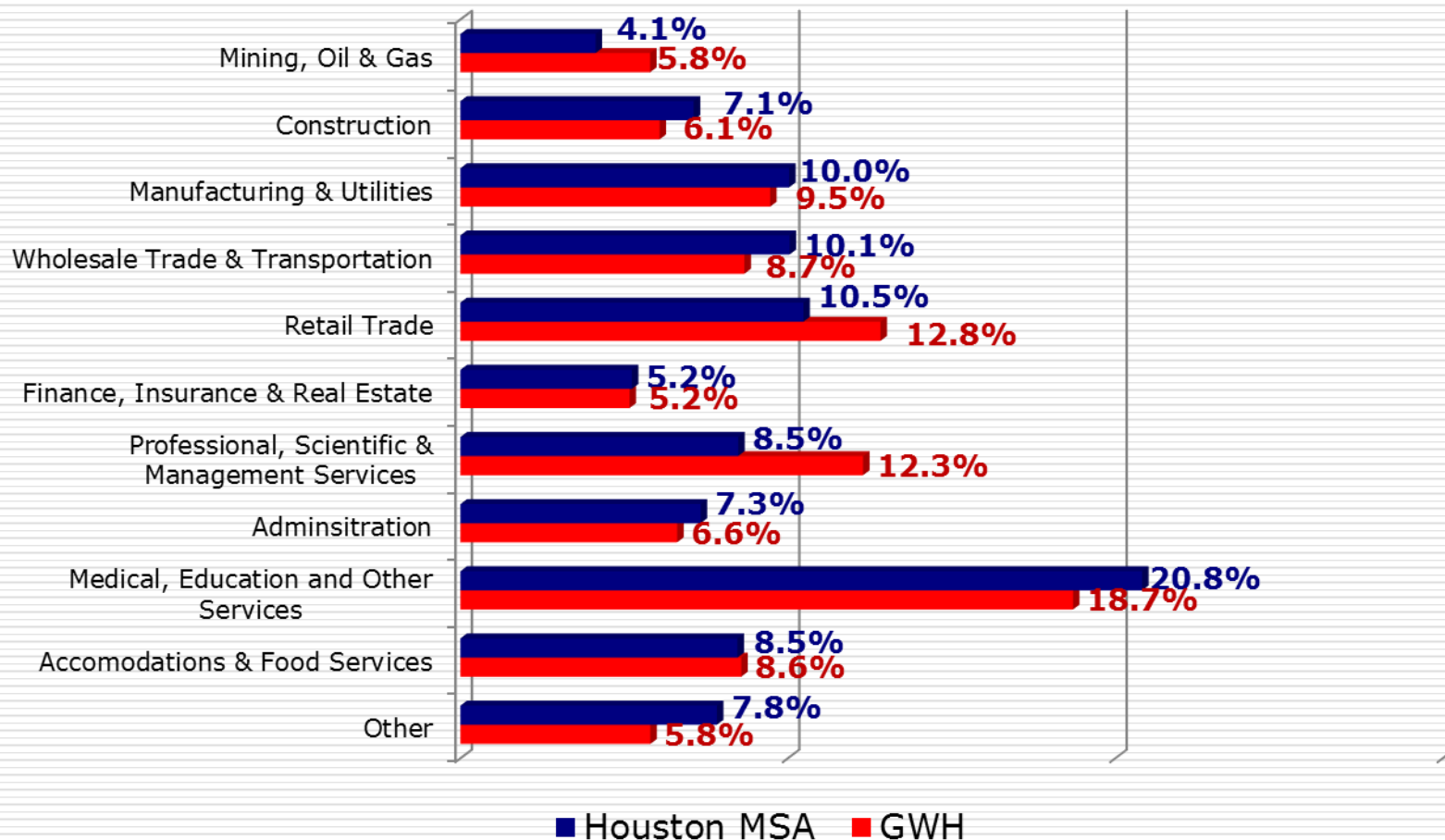
- ❑ 73.8% of households are family households
 - Compared with 71.1% in the Houston MSA
- ❑ 40.7% of families are married couples with children
 - 36.4% in the Houston MSA
- ❑ Housing vacancy rate is 7.1%
 - 9.3% in the Houston MSA
- ❑ Median home value is \$185,135
 - \$169,628 in the Houston MSA
- ❑ Median year built is 1996
 - 1989 in the Houston MSA

Employment Trend and Forecast



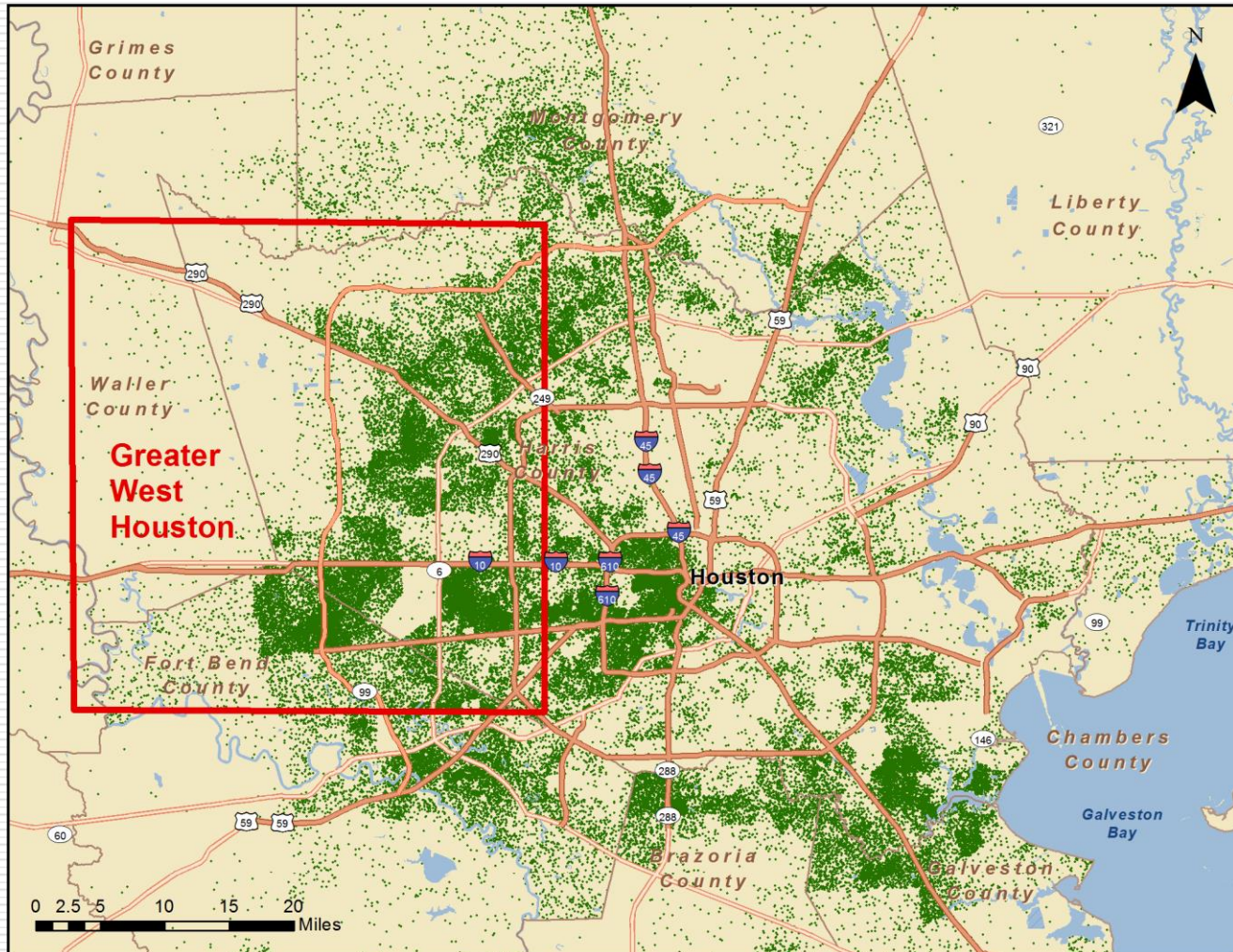
Source: Houston-Galveston Area Council for 1990 and 2000. CDS Market Research for 2010 and Forecasts

Jobs by Sector - 2013



Source: U.S. Census, Longitudinal Employment-Household Dynamics (LEHD) 2013

Location of Engineers



Source: PCensus for ArcView 2016



1001 South Dairy Ashford Street
Suite 450
Houston, TX 77077
www.cdsmr.com

Steve Spillette
President
281-582-0847
sspillette@cdsmr.com

Ty Jacobsen
281-582-0864
tjacobsen@cdsmr.com